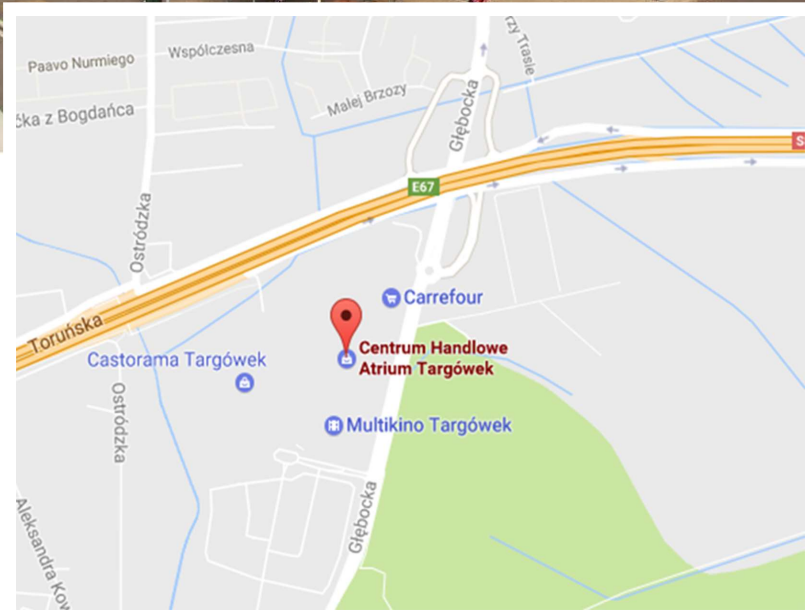
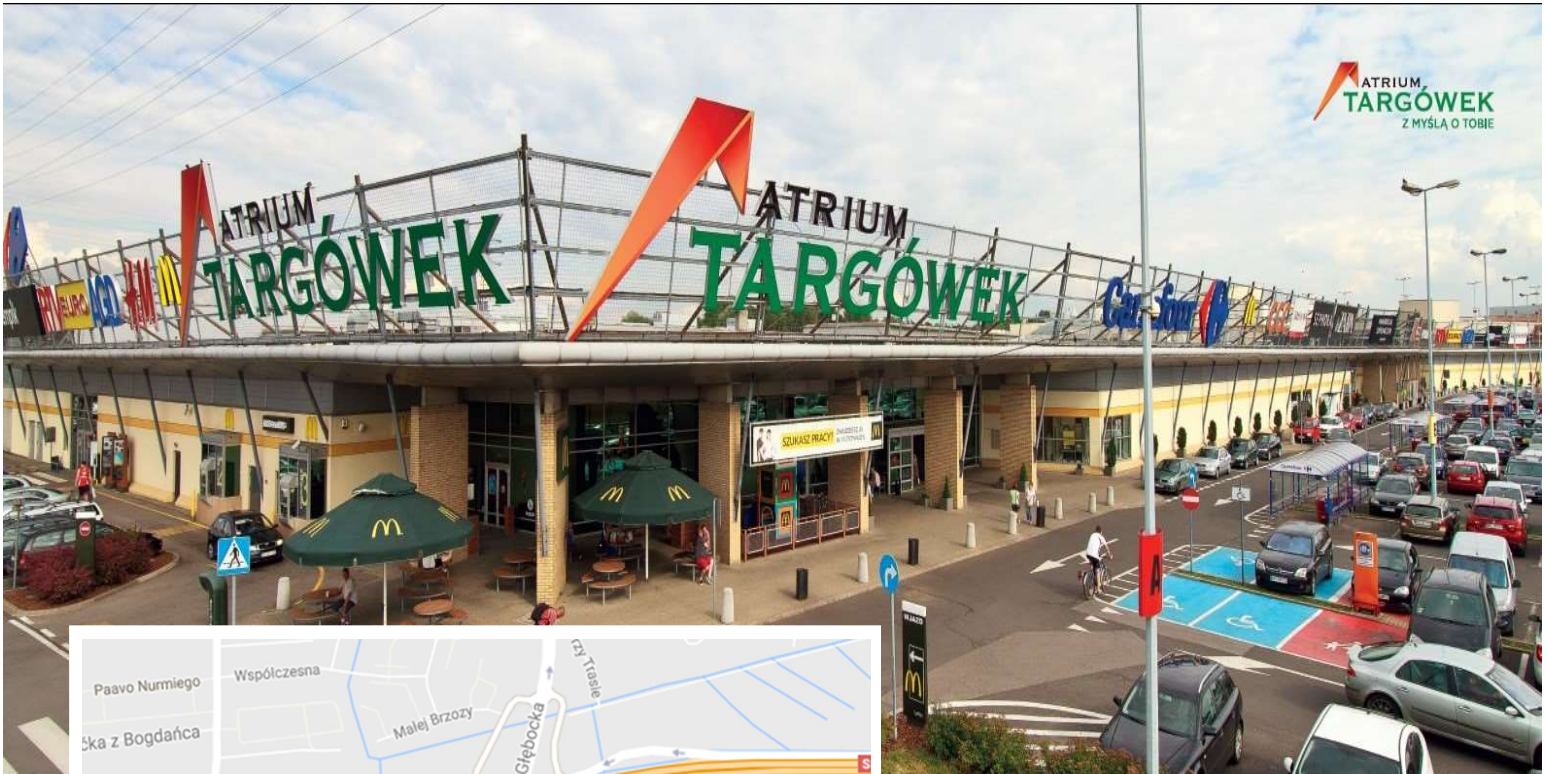


Atrium Targówek

Poland - ul. Głębocka 15, Warszawa



General Facts:

Year of Opening	1998
Total Retail GLA (m2)	37,986
No. Retail Units	154
Food Anchor	Carrefour
Parking Spaces	2,173

Demographics:

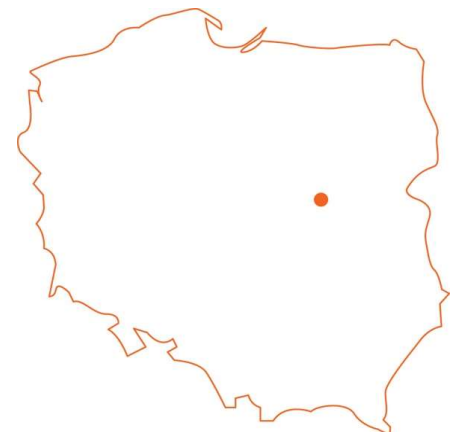
Population (2018)	1,769,529
-------------------	-----------

Leasing Contact:

Justyna Bergmann-Reczek
jbergmann@aere.com
Tel: +48 662 224 870

Regional Office:

For general enquiries:
Atrium Poland Real Estate
Management Sp. z o. o.
Ostrobramska 75c
04-175 Warsaw
Poland
Tel: +48 22 458 2000



atrium-targowek.pl

This document was created using an EVALUATION version of ActiveReports. Only a licensed user may legally create reports for use in production. Please report infractions or address questions to sales@grapecity.us.com. Copyright © 2002-2009 GrapeCity, inc. All rights reserved.

Disclaimer

The information in this document has been compiled from in-house and/or external sources, is provided for information purposes only, is subject to change over time, and may not be relied upon by any third party.

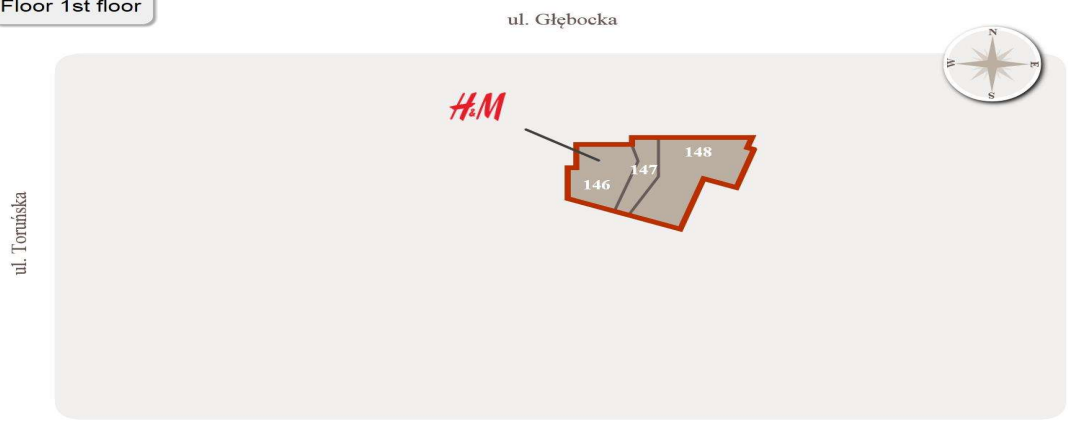
Last Revision: 03-2019

Floorplan and Anchors

Floor GF



Floor 1st floor



Top tenants

Top tenants						Vacancies			
145	Multikino	5,845 m ²	44	Carry	714 m ²	112	Rossmann	314 m ²	70 - 80 m ²
116-148	H&M	2,086 m ²	37	Empik	662 m ²	104	Sphinx	305 m ²	
45-65	Zara	1,437 m ²	11	Hebe	443 m ²	7	Diverse	292 m ²	
146	Jatomi Fitness	1,401 m ²	91	House	389 m ²	118	Promod	280 m ²	
119	Euro RTV AGD	1,108 m ²	134	CCC	358 m ²	136	Stradivarius	277 m ²	
105	Smyk	824 m ²	54	Cropp Town	348 m ²	114	Camaieu	265 m ²	
80	Reserved	629 m ²	109	Other	339 m ²				