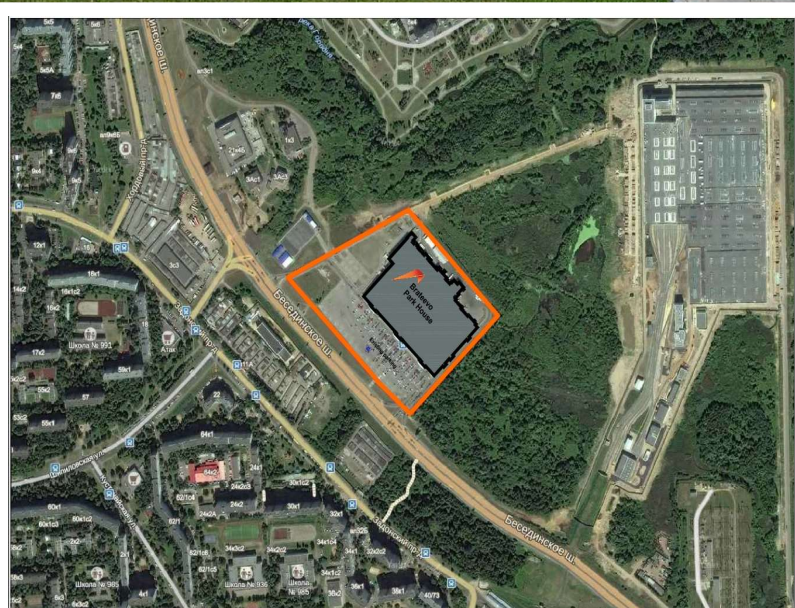


# Atrium's Park House Brateevo

Russia - Besedinskoye shosse, 15, Moscow



## General Facts:

Year of Opening	2005
Total Retail GLA (m2)	27,149
No. Retail Units	60
Food Anchor	Auchan
Parking Spaces	1,589

## Demographics:

Population (2018)	10,381,222
-------------------	------------

## Leasing Contact:

Anna Solovyeva  
asolovyeva@aere.com  
Tel: +7 495 232 42 64

## Regional Office:

For general enquiries  
Manhattan Real Estate Management  
The Triumph Palace  
JAVAD Business Centre  
Chapaevaeskij pereulok, bld. 3  
125057 Moscow  
Russia  
Tel: +7 495 232 42 64  
Fax: +7 495 232 42 65



[brateevo.atrium-parkhouse.ru/](http://brateevo.atrium-parkhouse.ru/)

This document was created using an EVALUATION version of ActiveReports. Only a licensed user may legally create reports for use in production. Please report infractions or address questions to [sales@grapecity.us.com](mailto:sales@grapecity.us.com). Copyright © 2002-2009 GrapeCity, inc. All rights reserved.

## Disclaimer

The information in this document has been compiled from in-house and/or external sources, is provided for information purposes only, is subject to change over time, and may not be relied upon by any third party.

## Last Revision:

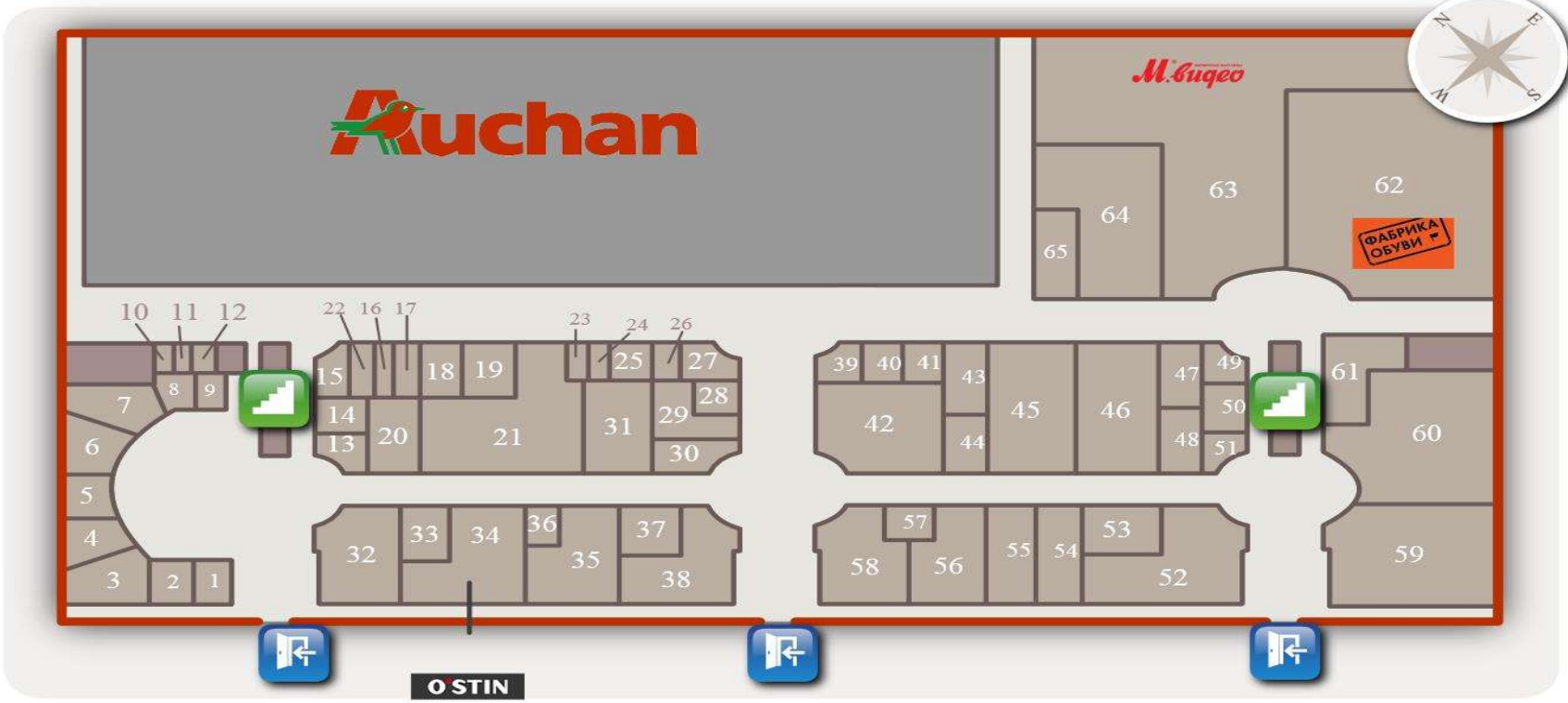
# Atrium's Park House Brateevo



Russia - Besedinskoye shosse, 15, Moscow

## Floorplan and Anchors

Floor GF



Проектируемый Проезд No. 5396

### Top tenants

Top tenants				Vacancies			
63	M.Video	2,880 m <sup>2</sup>	45 Zenden	308 m <sup>2</sup>	20 Etam	107 m <sup>2</sup>	64 - 506 m <sup>2</sup>
62	Fabrika Obuvi	1,207 m <sup>2</sup>	46 Mothercare	292 m <sup>2</sup>	53 Arya Home	106 m <sup>2</sup>	58 - 206 m <sup>2</sup>
59	Gloria Jeans and Gee Jay	1,010 m <sup>2</sup>	34 OSTin	272 m <sup>2</sup>	6 Burger King	104 m <sup>2</sup>	55 - 116 m <sup>2</sup>
7-12	INCITY, INCITY KIDS	458 m <sup>2</sup>	32 I Etoile	221 m <sup>2</sup>	61 Bleu De France Ecovit	95 m <sup>2</sup>	65 - 110 m <sup>2</sup>
21	Zolla	425 m <sup>2</sup>	35 OSTin KIDS	218 m <sup>2</sup>	37 Leansmaster	88 m <sup>2</sup>	48 - 77 m <sup>2</sup>
56	Galmart	410 m <sup>2</sup>	38 Anderssen	213 m <sup>2</sup>	47 Beeline	81 m <sup>2</sup>	29 - 73 m <sup>2</sup>
42	Ile de France	229 m <sup>2</sup>	31 O'Garden	157 m <sup>2</sup>			33 - 72 m <sup>2</sup>

**Disclaimer**  
The information in this document has been compiled from in-house and/or external sources, is provided for information purposes only, is subject to change over time, and may not be relied upon by any third party.

Last Revision: